

# Sliding Pop Up Easel Card

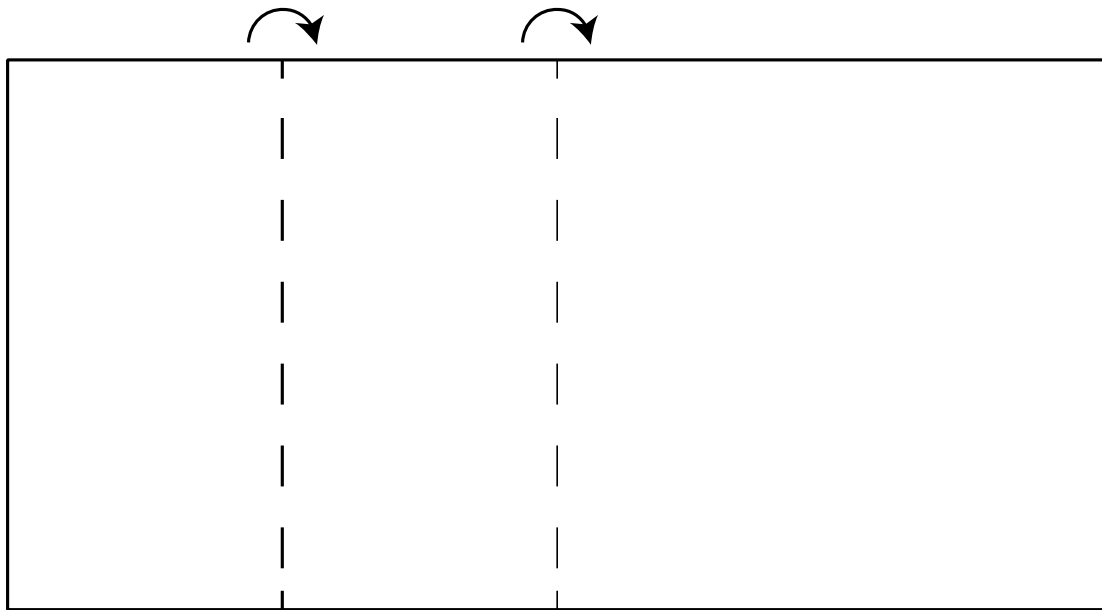


By Zoe McGrath

**Make it  
Crafty**

[www.makeitcrafty.com.au](http://www.makeitcrafty.com.au)

Begin by creating the base of your easel card. This is simply a regular square card but you fold one side of the card in half towards the centre of the inside fold.



Next design the front cover. The front cover will be the same size as the unfolded square on the right.

I decided to create a scene for my front cover that becomes the backdrop of my pop up card. You can create your backdrop using images, plain cardstock with cut out images or designer paper. Let your imagination do its magic. 😊



Next you need to decide what elements you want to pop up on the inside of your card as this will determine where you position your items and the size of the base you will need.

I decided to create my base at 14cm wide and 10cm deep leaving 4cm for the easel to stand in place.

Arrange your images on your base ensuring that they don't go over the edge of your card when lying flat or get folded in the centre fold.

For tall images positioned at the back, you want them to lay face down towards the front and for tall images at the front; you want them to lay face up towards the back.

For scene objects like I have created with the lily pads, I have folded part of the image so that part of it is flat on the base and part of it folds up. Make sure your fold is straight.

With your images in position mark a line on the base card where they will fold. Make sure your line is parallel (straight) with the edge of the front of the card.

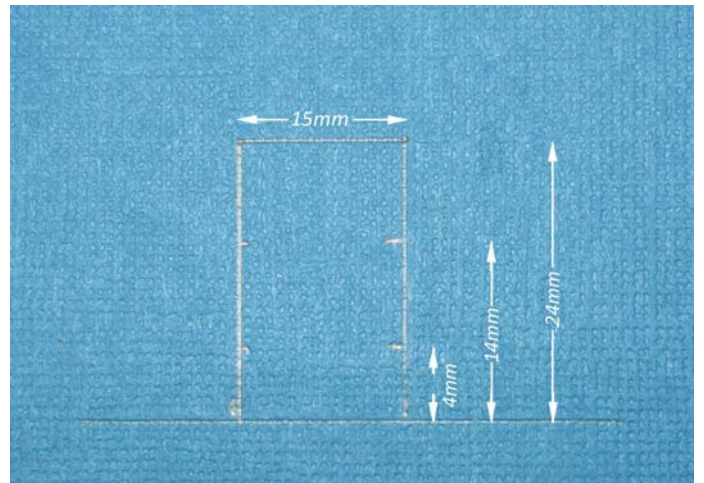


For objects that will fold forward when closed; cut a slot about a millimetre wide that is 'smaller' than the line you drew. It is best to do this either in the centre or at a high point of the folded object. In my example, I created two slots along the line at the two high points for extra stability.



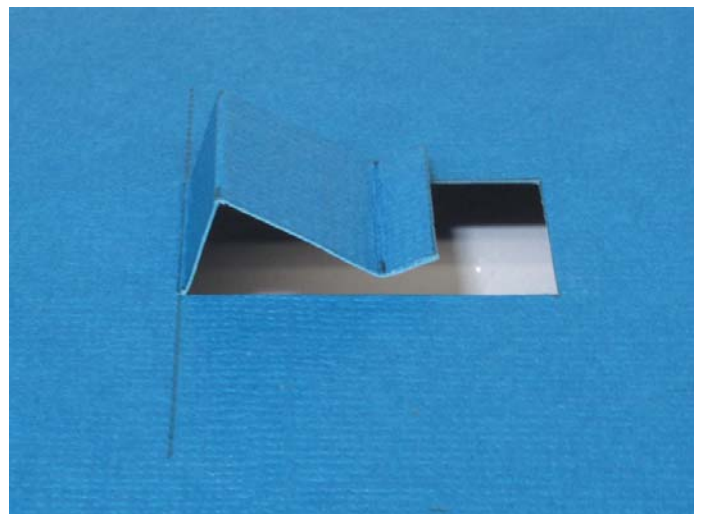
For objects that will fold backward when closed; we need to create a sliding mechanism. Select a point along the marked line and mark a 24mm line at a right angle. Then mark another 24mm line for the thickness of the tab. My tab is 15mm wide and approximately centred on the position marking.

Next add additional markings for your folds. My markings are 4mm from the position marking, and 14mm from the position marking.



Using a knife and ruler, cut the two sides and the top creating a tab. Make sure don't cut the bottom that will be folded to support your object.

Using a ruler, fold marked fold lines as shown below.

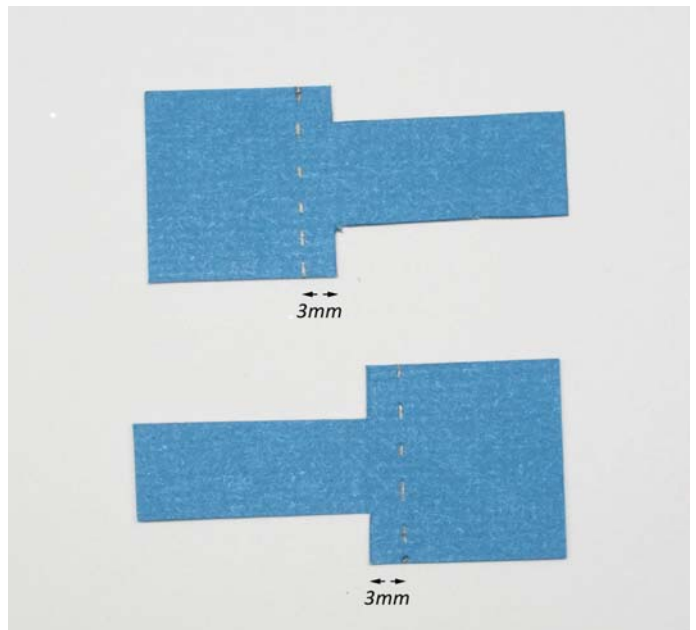


Next we need to create tabs for the slots. Cut pieces that look similar to the shapes below. The long end should be the width of your slot. These will slide up through the bottom of the slot and be attached to the folding object. You can trim their height later.

From the corner where the long end meets the square measure approximately 3mm for a fold.

View below:

Fold and set aside



To ensure the sliding mechanism will glide smoothly we need to raise the platform.

Cut two strips the length of each side of your platform at 15mm wide. Measure and mark two fold joints at 5mm apart on each end. Then score and fold. These will be tricky folds as they are thin so try to make them as straight as possible.



Follow the same steps for the back, trimming the sides so they all fit nicely around the corners. Tape or glue into place.



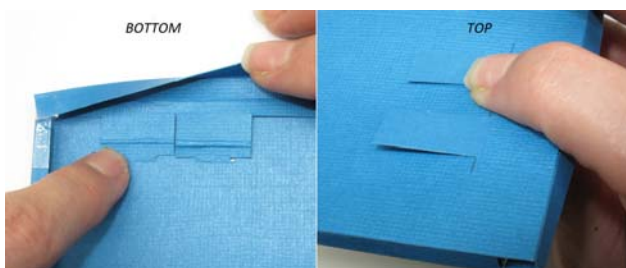
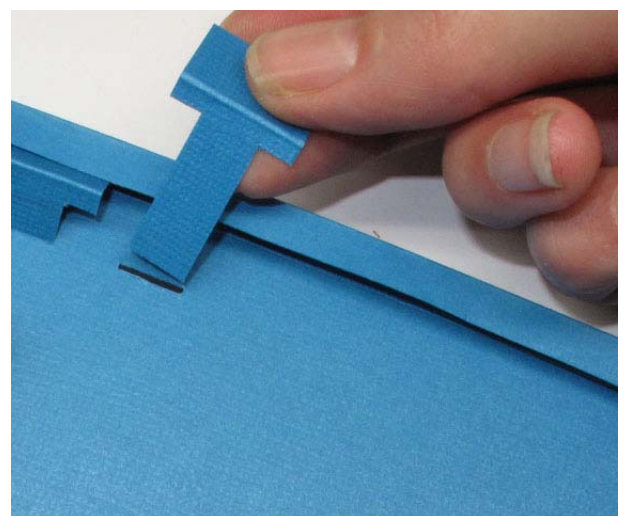
Now we need to create the sliding element. This needs to be able to freely slide inside the folded sides we just created.

Measure the distance between each side and deduct a couple of millimetres so that it is just slightly narrower. Repeat by measuring from the front to back. You want the slider to hit the back when it is slid in and be flush with the front.



Slide the slot tabs through the slots from behind, with the fold facing the back of the platform as shown in the image below.

Flatten them making sure that they fit in position. This is the position they will be in when attached to the slider.

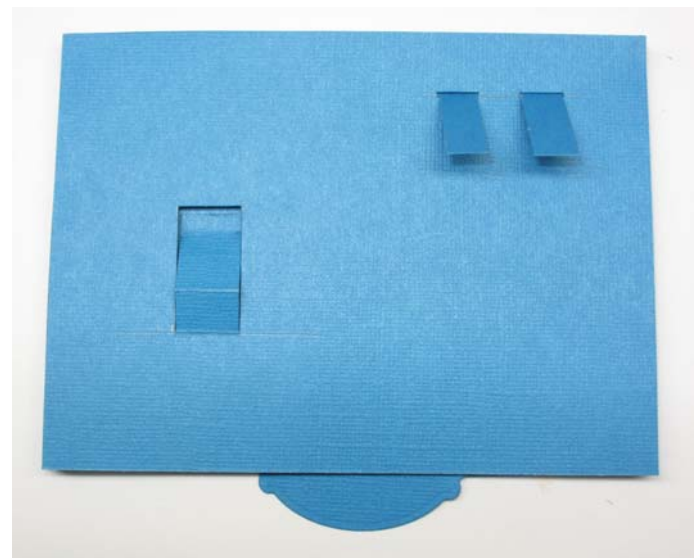


Add glue or tape to all of the tabs as shown and slide in the slider into the closed position and press firmly. Be careful to not add too much glue as spillage over the side will hinder the movement.

Now turn over and test the slider is working and all of the tabs are moving. Sometimes you may find you need to adjust your tabs and folds. It comes with practice. 😊

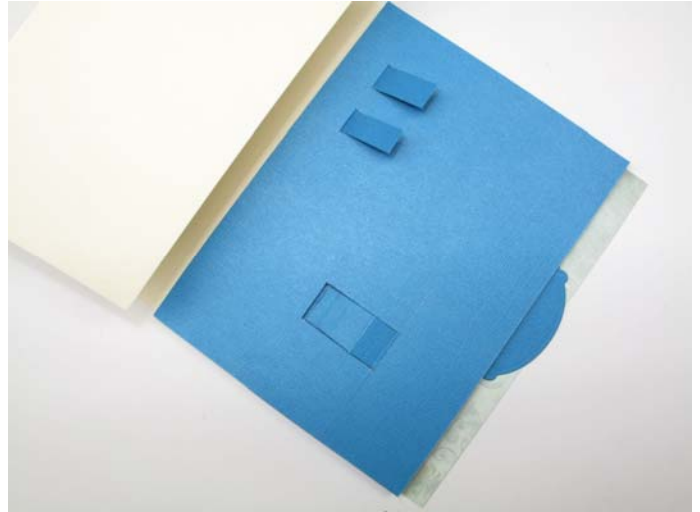
Create a little pull tab and attach it to the centre of the slider as shown below.

Now you are ready to put all the pieces together. Begin by adding tape to the bottom of the platform.

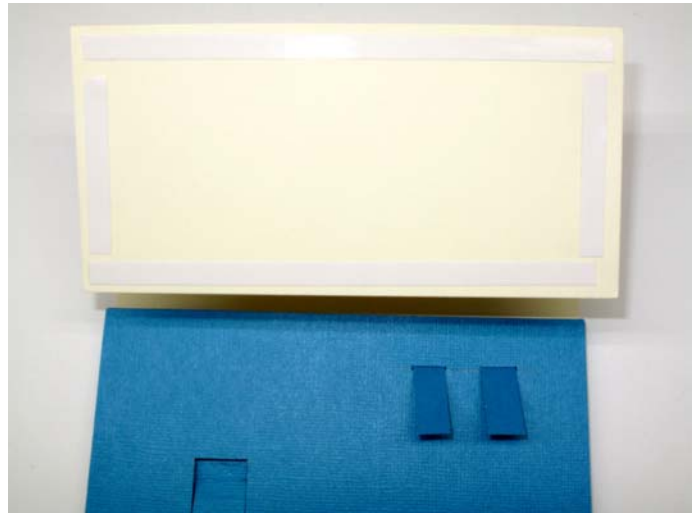


Attach the platform to the base of the card.

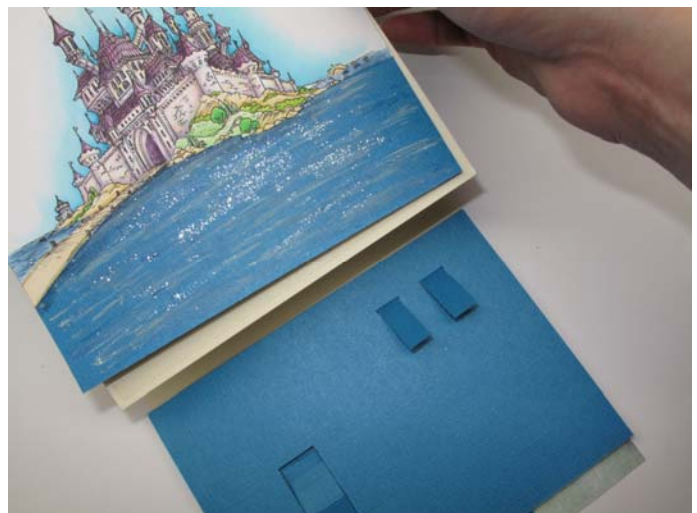
To help keep the sliding motion smooth you may have to add a strip over the back fold to ensure the slider doesn't crash into the edge of the fold. Test this using temporary glue before fixing in place.



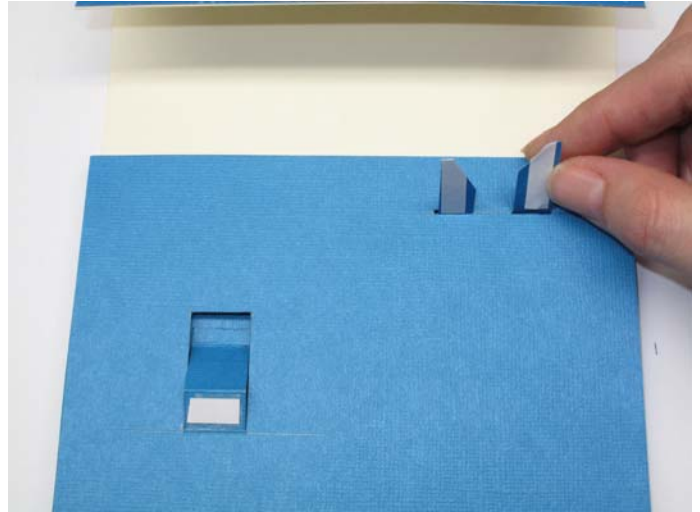
Apply tape to the front fold of the easel.



Attach the backdrop to the easel aligning the bottom corners of each.



Apply tape or glue to the tabs as shown.



Attach your objects to their tabs in the 'DOWN' position. Make sure that if you have used objects with a fold like mine that the fold is perfectly aligned in position otherwise it can stretch and pull off the tab.



For objects that are freestanding, stick them just slightly above the platform so they move freely and the bottom doesn't get stuck and fold.

You're now finished!! Make sure everything is dry and slide and pop away!!



Depending on the card you have used and how thick your folds and card are some of the objects may not lay completely flat.



This is how the card looks side when closed.

